

The Online Undergraduate Programmes in Economics, Management, Finance and the Social Sciences (EMFSS)

» Awarded by the University of London

» Academic Direction by the London School of Economics and Political Science (LSE)



**UNIVERSITY
OF LONDON**

LSE

THE LONDON SCHOOL
OF ECONOMICS AND
POLITICAL SCIENCE ■



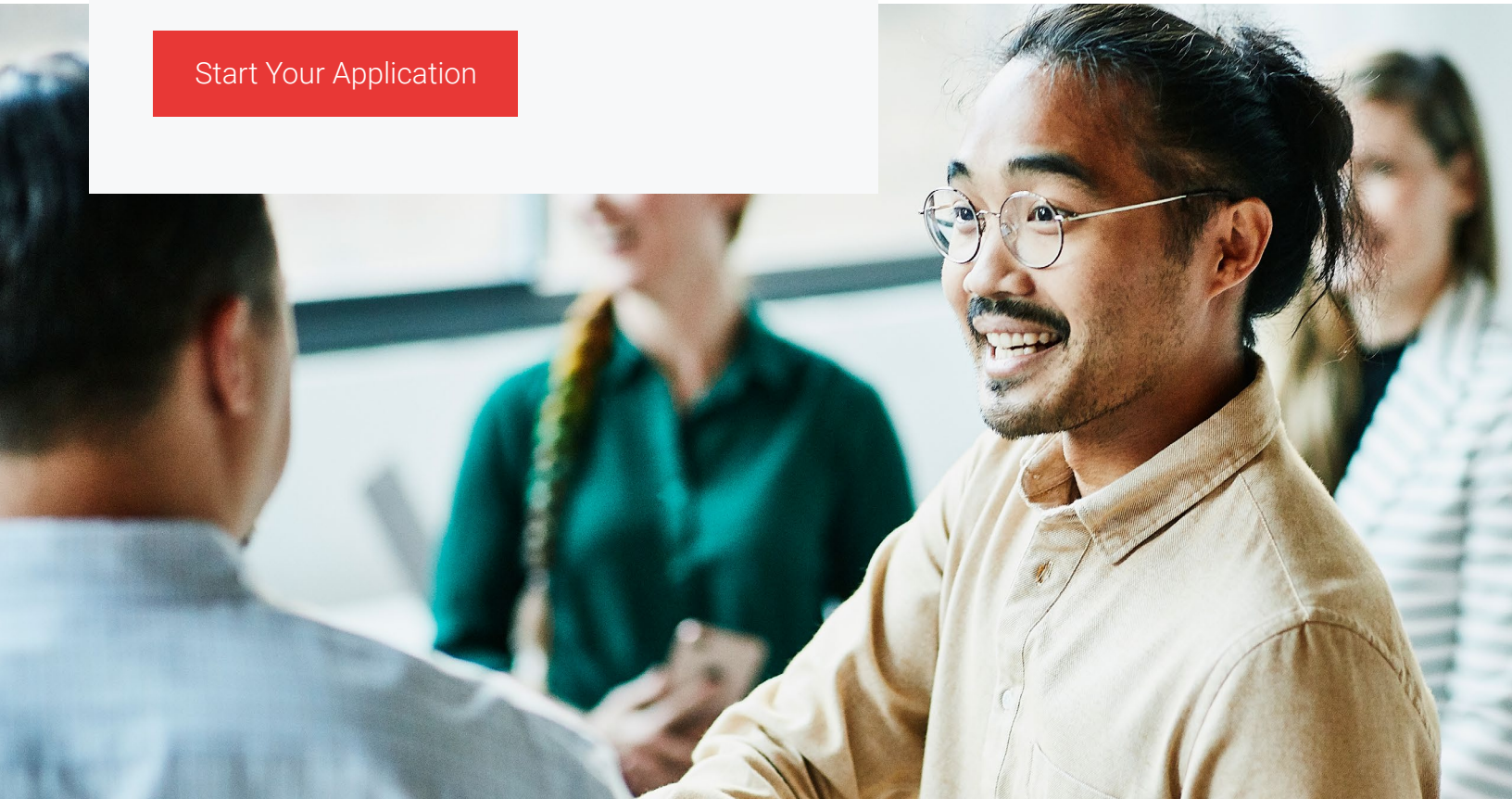
Table of Contents

Online Learning for a Changing World and Workplace	3
About Our Institutions	4
About Your Qualifications	5
Our Programmes	6
Admissions Requirements	9
Recognition of Prior Learning	12
Tuition and Fees	13
Online Learning	14

At the University of London and LSE, we believe students should have access to world-class learning opportunities no matter where they live.

The online taught EMFSS programmes build on this mission, giving you the opportunity to engage with high-quality academic content and insights from expert LSE faculty. You will graduate with a rich understanding of the challenges that define your chosen field – and the essential analytical and critical thinking skills to make a positive impact on society.

[Start Your Application](#)



About Our Institutions

The University of London

Founded in 1836, the University of London was the first university to admit students regardless of their gender, race or religion, the first to admit women to degree programmes and, in 1858, the first to give students the opportunity to study wherever they are, providing access to higher education across the globe.

Most University of London programmes are developed by leading academics at our 17 member institutions, who set the curriculum and assessment and assure the quality of the learning and teaching materials. Notable alumni include seven Nobel Prize winners – including Nelson Mandela – industry leaders, scientists and politicians who have shaped our world.

50,000+

students

190+

countries

200+

qualifications

The London School of Economics and Political Science (LSE)

LSE is a world-leading social science university that takes an interdisciplinary approach to learning. LSE students develop a holistic understanding of “the causes of things,” challenge conventional ways of thinking and tackle society’s most complex problems.

LSE alumni and academics are making transformative contributions in diverse fields and sectors, from academia to politics. Our community includes 37 past or present prime ministers, presidents and premiers; 18 Nobel Prize winners; and seven Pulitzer Prize winners.

#2

worldwide for social sciences and management¹

37

world leaders

18

Nobel Prizes in economics, peace and literature

¹ [Social Sciences and Management](#). (2020). QS World University Rankings. Retrieved 17 December 2020.



About Your Qualification

Completing your studies represents a tremendous personal achievement that demonstrates hard work, commitment, and dedication. When you graduate with a degree, diploma or certificate from the University of London you will receive two important documents as proof of your qualification:

Final Diploma

This indicates that you were registered with the University of London and awarded a University of London degree. It also states that LSE provided the academic direction and assessment.

Diploma Supplement

This describes the nature, level and content of the programme that you've completed, lists your courses, marks and overall classification. It also clarifies LSE's role and the method of study.

Our Programmes



BSc Finance

Focus on specific finance techniques, analytical methods and decision-making strategies, and develop the practical skills to solve real-world finance issues.



BSc Accounting and Finance

Prepare for a range of widely recognised professional accounting accreditations, and learn how to analyse, report on and evaluate financial information.



BSc Economics and Finance

Develop the quantitative skills and institutional knowledge required to make financial decisions, manage risk and understand market behaviour.



BSc International Relations

Study the functions, theory and history of the international system, and critically engage with contemporary issues like climate change and financial inequality.



BSc Business and Management

Become a strategic problem-solver who can take a multidisciplinary approach to analysing international business challenges.



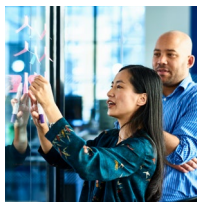
BSc Data Science and Business Analytics

Become a strategic problem-solver who can take a multidisciplinary approach to analysing international business challenges.



BSc Economics

Explore how the world's resources are used and distributed, and prepare to work as an economist in industry, academia, finance or government.



BSc Economics and Management

Boost your analytical and communication skills as you apply key economic principles to management scenarios.



BSc Mathematics and Economics

Build a robust quantitative knowledge base and learn to take an in-depth analytical approach to economics using mathematics and statistics.



Ready to Plan Your Future?

Take the next step by starting your application.

[APPLY NOW](#)

Admissions Requirements

We welcome applications from first-time, transfer and returning students alike. You may still be eligible for admission even if you do not meet the following criteria: Our Admissions Panel considers each application on its own merits, accounting for a variety of qualifications, experiences and credentials that may qualify you for entry.

4 Annual Start Dates:

August, November, February, May



Admissions Requirements

Qualifications by Age and Country

Applicants must be at least 17 years of age by the registration deadline. Exceptions may be made on a case-by-case basis. In addition to the below, all applicants must meet the Mathematics and English language requirements for entry.

If you are age 20 or younger, you must have passed qualifications that satisfy the General Entrance Requirements, equivalent to 3 UK GCE A-levels in non-overlapping subjects where grade EED or above is achieved, or one year of university credits (120 UK credits or 60 ECTS or 30 US credits).

If you are ages 21-26, you may qualify under Reduced/Mature Entry criteria: 1 UK GCE A-level at grade C or above or an acceptable equivalent (60 UK credits or 30 ECTS or 20 US university credits). Work experience may also be taken into consideration in lieu of or in conjunction with academic requirements.

If you are age 27 or older, you may qualify under Reduced/Mature Entry criteria: 1 UK GCE A-level at grade E or above or an acceptable equivalent (60 UK credits or 30 ECTS or 20 US university credits)). Work experience may also be taken into consideration in lieu of or in conjunction with academic requirements.

If your qualifications are not from the United Kingdom, view our [Qualifications for Entrance page](#) to learn more about the requirements for your country.

Mathematics Requirements

All applicants are required to demonstrate competence at least equivalent to mathematics at UK GCSE Level (Grade C) or equivalent.

If you are applying to the BSc Data Science and Business Analytics or the BSc Mathematics and Economics applicants must demonstrate competence at least equivalent to mathematics at UK GCE A-level (Grade A–E) OR have earned 15 UK credits, 7.5 ECTS or 6 US college-level credits in one or more of the following subjects (or acceptable equivalents from around the world):

- mathematics, engineering mathematics, computing mathematics, algebra, geometry, trigonometry, quantitative techniques/methods, statistics, business statistics, business mathematics, calculus, differentials or algorithms

We accept many qualifications from around the world, including school qualifications, diplomas and professional awards.

[View acceptable equivalents by country.](#)

Admissions Requirements

English Language Requirements

You are required to demonstrate English proficiency to be admitted to our programmes. We accept a range of evidence, including proficiency tests. If you don't have evidence but believe you can meet the standard, we may consider your case.

Graduate Entry Requirements

Graduate Entry is ideal for existing degree-holders who are considering a different career path or further study in a new discipline. Those who are eligible for Graduate Entry may be able to complete a shorter than usual study programme. We offer Graduate Entry for the following programmes:

BSc Accounting and Finance

BSc Economics and Finance

BSc Business and Management

BSc Economics and Management

BSc Data Science and Business Analytics

BSc Finance

BSc Economics

BSc International Relations

You may apply for Graduate Entry if you hold an acceptable undergraduate or postgraduate award. The awarding programme must be full time, at least one year in duration and considered at least comparable in level to a UK undergraduate degree. We will consider other undergraduate, postgraduate, professional membership and professional qualifications on an individual basis. You must also satisfy English language and mathematics requirements for your chosen degree.

Admissions Requirements

Application Materials

Personal Statement: Your personal statement (100–250 words) should answer the following question: “Why do you wish to study for the programme to which you are applying? Please include details about your education, work experience and current responsibilities.”

Complete/Incomplete Postschool Certificates or Transcripts: We need to see evidence of the relevant qualifications before we can process your application. We may ask for further evidence after you have submitted your application. You may provide evidence in one of two ways:

- Arrange for the awarding/examining authority to send us a statement or transcript of your results. The statement/transcript should include your name, date of birth and University of London student reference number (if available).
- Have your original documents verified by an official authority, business or organisation. Verification means that your original document has been seen and a photocopy has been stamped and signed to be a true copy of the original.

Optional Materials: The following materials are not required, but you may submit them if you feel these items will demonstrate your academic preparedness:

- Résumé or CV
- Work references
- Standardised test scores
- Professional certificates

Verified Identification: Once you’ve submitted your application, you will also be required to provide evidence of your full name and date of birth. Please submit a photocopy of your passport, national identification card or driving license. If you have changed your name, you must also submit a photocopy of your marriage certificate, deed poll, statutory declaration or affidavit.

Recognition of Prior Learning (RPL)

Recognition of Prior Learning (RPL) is the process by which we recognise and award credit for learning that has taken place at the University of London or elsewhere.

To qualify for RPL, you must have passed degree- or professional-level examinations in subjects that compare in level, content and standard to the course(s) for which you are seeking recognition. Your qualification(s) must have been completed within the five years preceding your application. There are two types of RPL:

Discretionary RPL

If you hold other qualifications that you believe reflect similar learning outcomes to any of your programme courses, we will consider them on a case-by-case basis.

Automatic RPL

If you hold certain qualifications, evaluated annually, you may automatically qualify for RPL: [Qualifications for Automatic RPL \[PDF\]](#).

You must indicate your intent to seek RPL in your application and provide transcripts and syllabi for the courses requested. You may only submit one course for consideration against each RPL request. RPL requests will not be accepted once your application has been submitted. **If you are applying for discretionary RPL, we encourage you to submit your application as early as possible to ensure the Admissions Panel has sufficient time to review your qualifications.**

You may be granted up to 30 credits of RPL through [LSE's Summer School](#). Courses must be pre-approved by your admissions counsellor and LSE and completed prior to submitting your application.

All RPL requests are considered on an individual basis and are granted at the discretion of the University of London. You may apply for RPL for a maximum of four 100-level courses if undertaking a Standard Route degree programme, and for a maximum of one 100-level course if applying for a programme through Graduate Entry Route. We reserve the right to deny RPL requests if the qualification of a professional body or institution changes following the annual publication of the [EMFSS Automatic Accreditation of Prior Learning](#).

[Start Your Application](#)

Tuition and Fees

The academic year is split into two half-year study sessions, each containing 20 weeks of learning. In advance of each study session, you will select and pay for the courses you wish to study. You can register for a maximum of two full courses per study session. We encourage students to study and examine at least three full courses per academic year.

Student Type	Full Course Cost (20 Weeks)	Half Course Cost (10 Weeks)	Full Course Resit Fee	Half Course Resit Fee	Indicative Total Programme Cost (12 Full Courses)
UK Residents	£1,459	£729	£346	£173	£17,500
International Students*	£1,709	£854			£20,500

* International students who pay the full programme cost up front will not be subject to annual price increases.

Other costs may include the following:

Textbook fees

You may also need to budget for textbooks (which could extend to around £300 per year).

Exam centre fees

Your tuition includes the University examination entry fee; however, you will be required to pay an examination centre fee directly to the venue each time you sit an exam.

Examination resit fees

If you need to resit a course, you must pay a resit fee. The current resit fee for full courses is £302.

All student fees shown are net of any local VAT, Goods and Services Tax (GST) or any other sales tax payable by the student in their country of residence. Where the University is required to add VAT, GST or any other sales tax at the local statutory rate, this will be added to the fees shown during the payment process. For students resident in the UK, our fees are exempt from VAT.

*The indicative total assumes you complete the qualification without resits. It does not reflect potential annual fee increases and is not inclusive of examination centre fees.

Online Learning That Puts You First

Designed by technology and education experts, our digital campus helps you build a community as you cultivate your skills.



An Intuitive Student Dashboard

Available via desktop, tablet and mobile devices, your centralised dashboard allows you to access course materials and attend live sessions from anywhere.



Live Online Sessions

Held fortnightly, these collaborative sessions – equipped with screensharing, chat and group breakout features – bring you face-to-face with your class teachers and peers.



Customisable Learning Options

Built-in study tools like TV streaming, captioning, video playback and searchable course transcripts help you study in ways that support your learning preferences.



Support at Every Stage

Our dedicated admissions counsellors, student success advisors, class teachers, and technical support specialists will help you navigate questions and challenges throughout your programme.



Career-Planning Resources

Your complimentary subscription to LinkedIn Premium Career includes salary insights, LinkedIn Learning courses, interactive interview preparation and expanded InMail options.



Take the Next Step

Starting your application takes just a few moments.

APPLY NOW

